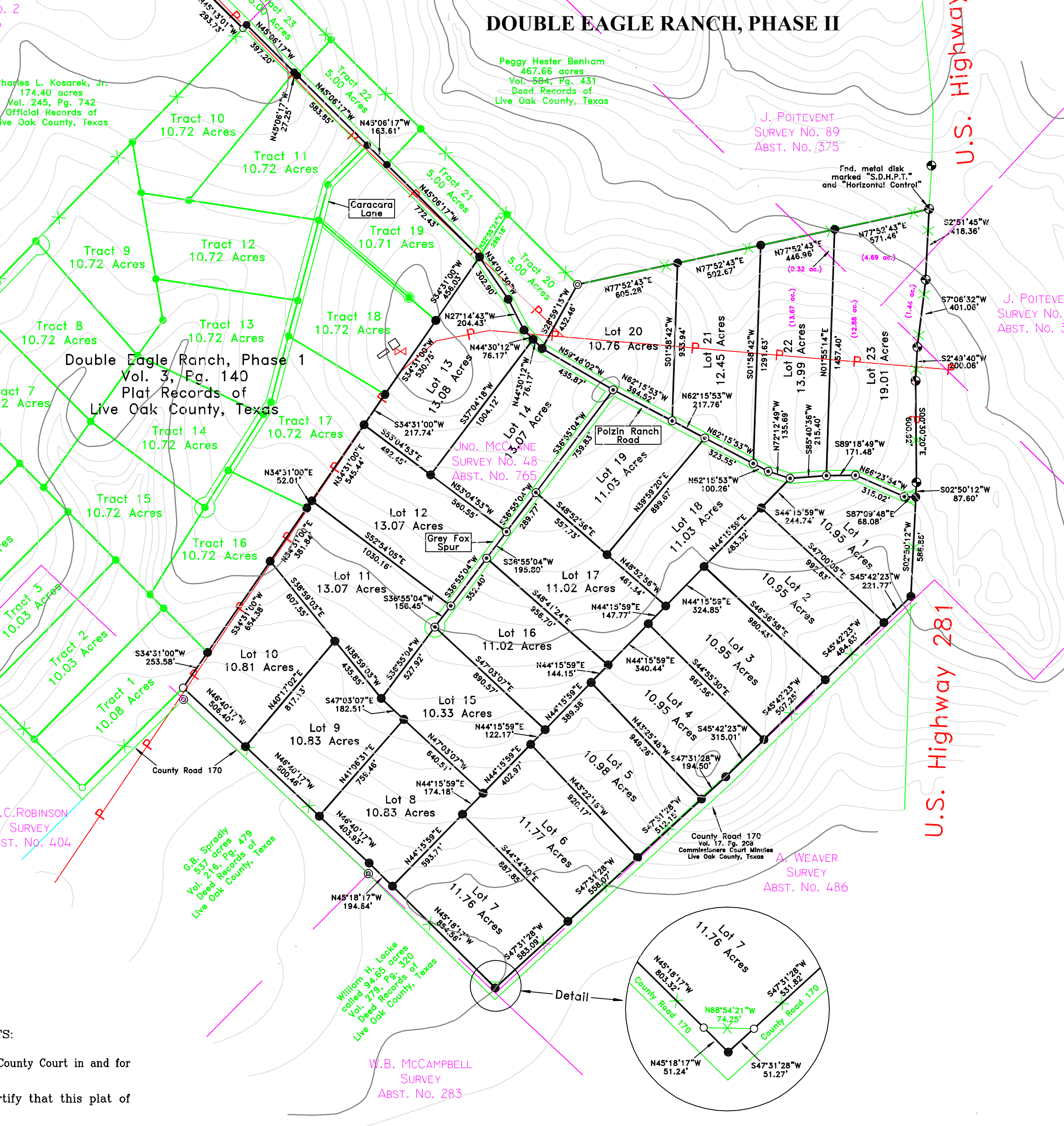


DOUBLE EAGLE RANCH, PHASE II



Peggy Hester Benham
467.66 acres
Vol. 584, Pg. 431
Deed Records of
Live Oak County, Texas

J. POITEVENT
SURVEY No. 89
ABST. No. 375

J. POITEVENT
SURVEY No. 89
ABST. No. 375

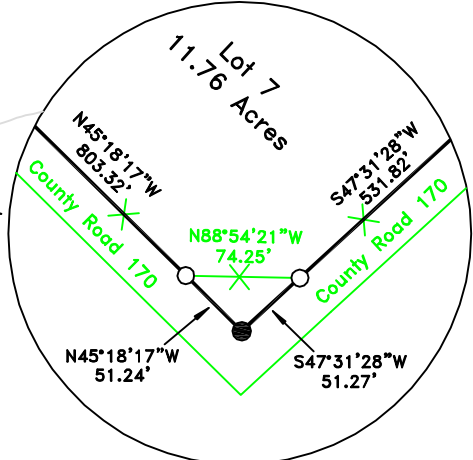
JNO. MCCAMPBELL
SURVEY No. 48
ABST. No. 765

A. WEAVER
SURVEY
ABST. No. 486

G.B. SPRADLY
Deed Records of
Live Oak County, Texas
Vol. 216, Pg. 479

William H. Locke
called 94.65 acres
Vol. 279, Pg. 320
Deed Records of
Live Oak County, Texas

W.B. MCCAMPBELL
SURVEY
ABST. No. 283



U.S. Highway 281

U.S. Highway

Charles L. Kosarek, Jr.
174.40 acres
Vol. 245, Pg. 742
Official Records of
Live Oak County, Texas

C. ROBINSON
SURVEY
ST. No. 404

County Court in and for
to certify that this plat of